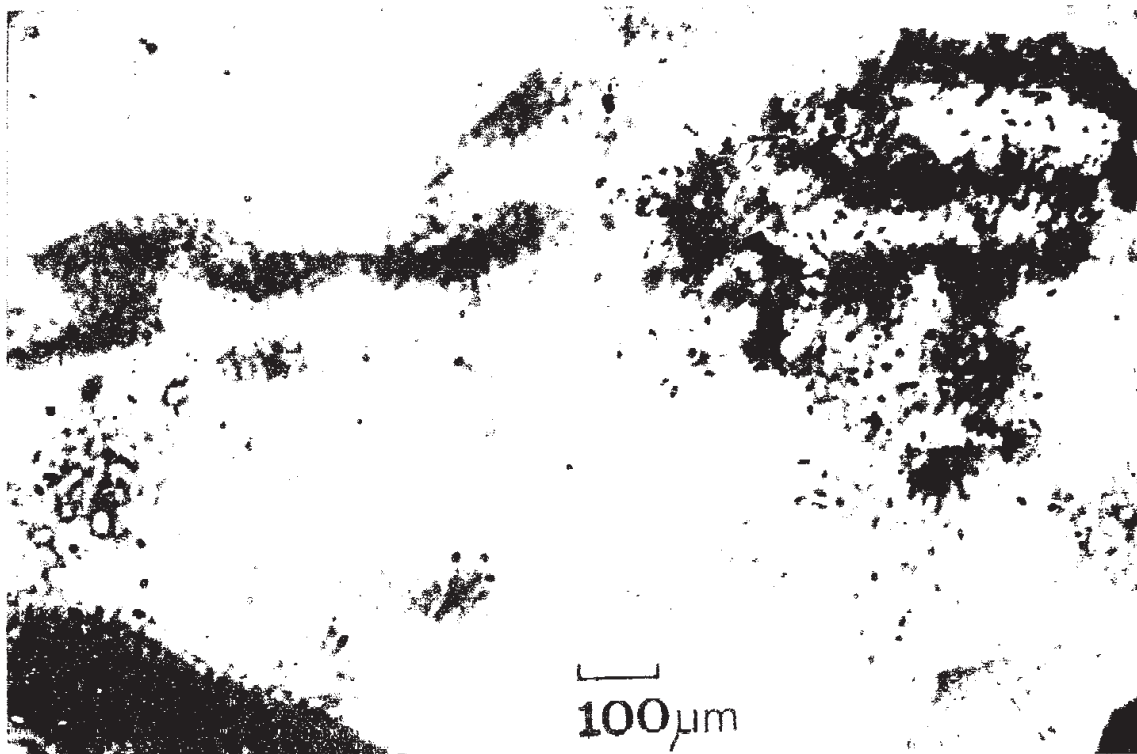


Mytilus edulis. Thin section across the lumen of the intestine of Ravenglass individuals illustrating the presence of hot particles recorded in CR39 detector superimposed upon the section. Exposure period 166d.



Mytilus edulis. Distribution of α activity in a transverse kidney section of Ravenglass individuals illustrating localised enriched levels of activity. Procedures as above (Hamilton 1980)