

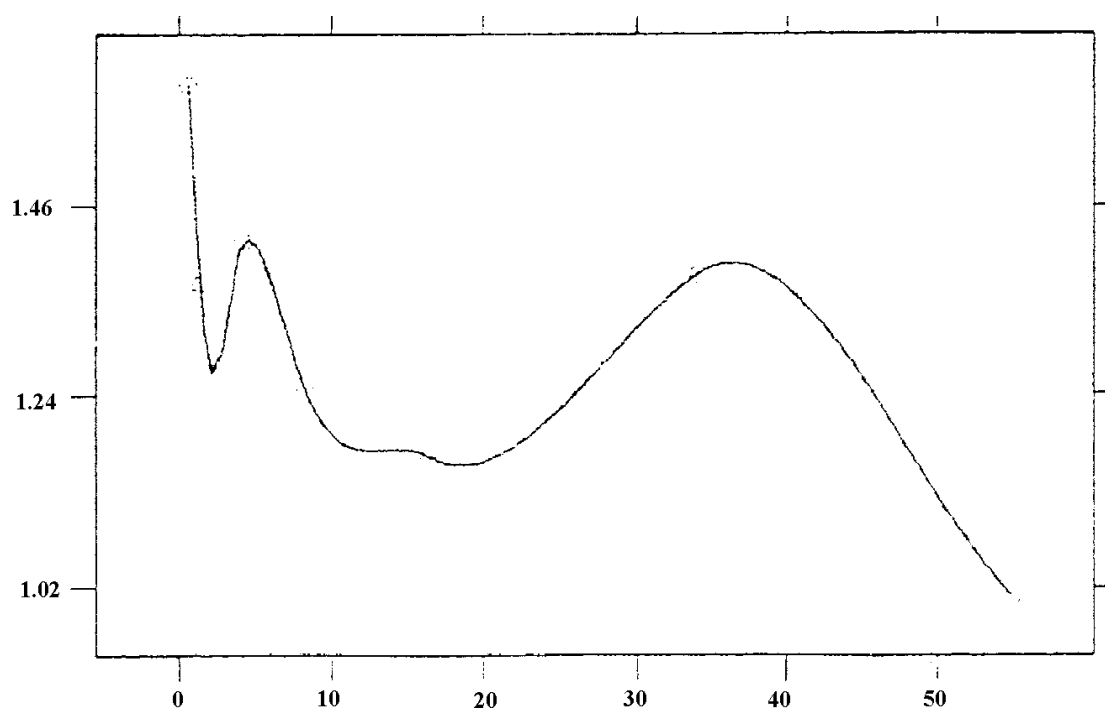
**Relative Risk of female breast cancer, all ages (ICD 174,) by aggregates of
Areas of Residence distance from the Irish Sea, 1974-89**

^a <sd>: Sea distance	Number of AORs	Population M+F in 1981	Observed cases 74-89	Expected cases 74-89	^b Relative Risk (P-value)
<0.8	18	133,031	1747	1090	1.6 (<.000)
0.9<sd<2	17	167,268	1689	1235	1.37 (<.000)
<1.0	28	248,677	2961	1960	1.51 (<.000)
2.1<sd<5	15	155,337	1613	1137	1.42(<.000)
<2.0	35	300,299	3436	2325	1.48 (<.000)
5.1<sd<11	15	220,080	1900	1515	1.25 (<.000)
11.1<sd<20	12	81,175	669	570	1.17 (<.001)
21<sd<40	17	148,603	1403	1016	1.38 (<.000)
>41	23	115,053	837	831	1.01 (<.000)
>11	52	344,831	6949	4977	1.40 (<.000)
>5.1	67	564,911	4809	3933	1.22(<.000)
<5.0	50	455,636	5049	3462	1.46 (<.000)
South Wales	62	1,400,887	10,907	9275	1.17 (<.000)

a <> refers to less to or equal to and greater than or equal to.

b P values based on χ^2 test

Source: Wales Cancer Registry, *Welsh Areas of Residence Datafiles* 2218 May 1995.



Trend with distance from Irish Sea of Relative Risk in aggregated groups of AORs, female breast cancer (ICD9: 174) all ages, 1974-89 (LOESS plot)

Source: Wales Cancer Registry, *Welsh Areas of Residence Datafiles* 2218 May 1995