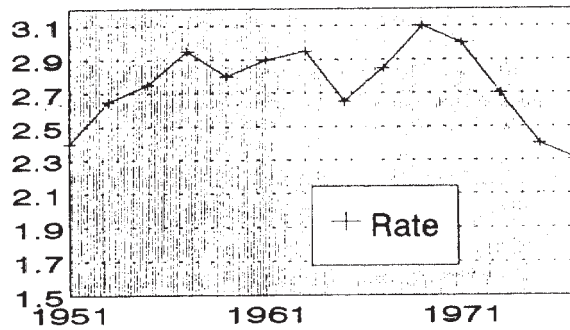
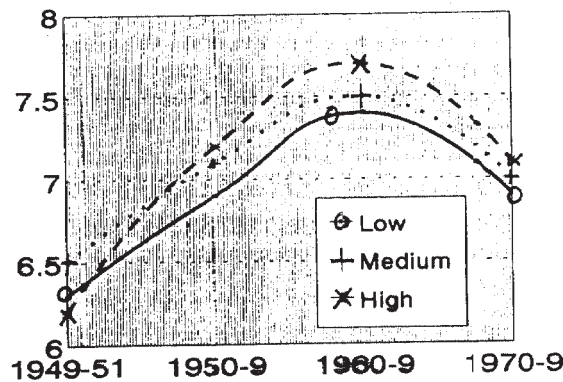


(a) Myeloid and acute leukemia: death-rates in 15-19 age-group, 1950-77 (2-year units)



(b) Myeloid and acute leukemia: death-rates in 5-9 age-group, 1950-77 (2-year units)



(c) Leukemia deaths per 100,000 people per year according to the level of Sr-90 in milk, food, and bone.

FIG. 5.4. Changes in Age-adjusted death-rates for all leukemias among both sexes, whites only, in selected states of the USA, grouped by amount of Sr-90 in milk, food, and bone. Source: Archer, 1987.